

# RS2000LAB/RS2100LAB Portable Raman Spectrometer

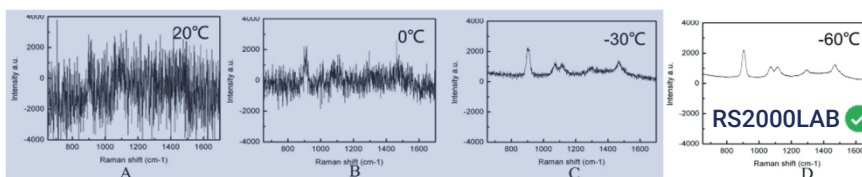


JINSP® RS2000LAB portable Raman spectrometer is a high-performance analytical instrument, which supports fast, non-destructive, qualitative, and quantitative analysis of chemicals, with high sensitivity, high SNR and wide spectral coverage.

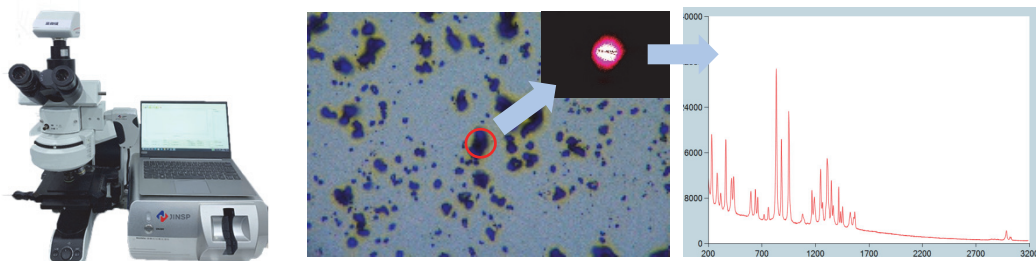
RS2000LAB can be configured with different excitation wavelengths depending on the specific analysis requirements (optional 4 channels at most). Different types of test accessories and sample holders can be employed to satisfy detection requirements in the fields such as pharmaceutical research, biomedicine, chemical analysis, material research, etc.

## Benefit Highlights

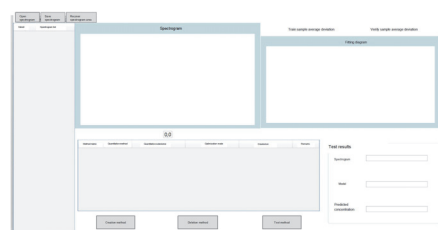
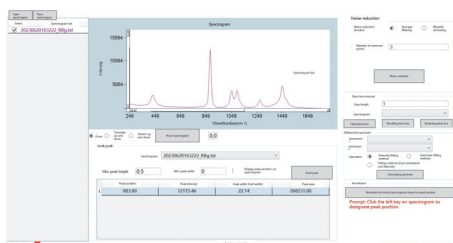
- **High light efficiency:** Transmission spectrometer as the core
- **Multi-channel capability:** Optional four channels at most with a cost effective performance
- **High sensitivity:** Deeply cooled detector with high sensitivity, high SNR, etc.



- **Flexible application:** Raman microanalysis available with a microscope



- **Powerful software functions:** Data acquisition, spectrum smoothing, noise reduction, spectrum subtraction, data comparison, establishment of quantitative analytical methods, etc.



## JINSP COMPANY LIMITED

JINSP Company Limited (JINSP) is a company specialized in spectral analytical technology. With the experts in such fields as optics, machinery, electricity and software, we are engaged in the development and production of scientific and industrial spectrometers. With our existing technology, JINSP has won key awards in several international invention exhibitions and more than 200 patents, and passed the European Union CE certification and the EU Civil Aviation ECAC certification. Our thousands of products have been exported to dozens of countries worldwide.



Contact us

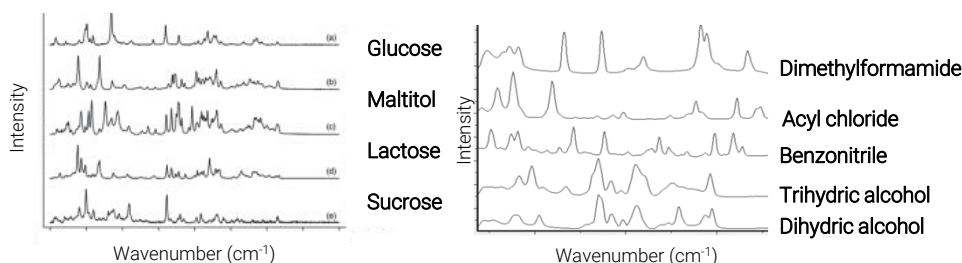
# RS2000LAB/RS2100LAB Portable Raman Spectrometer

• **Multi-function detection accessories:** With accessories including solid cap, liquid cap, light-proof sample measuring cell, etc., RS2000LAB can be used to analyze solid, powder, or liquid samples.



## Applications

1. Material analysis
2. R&D analysis of drugs
3. Crystal form research
4. Identification of cultural relics and jewellery
5. Food and drug safety analysis



## Specifications

Excitation wavelength	785 nm or 1064 nm
Laser power	0 ~ 500 mW, continuously adjustable power
Spectral coverage	200 ~ 2600 $\text{cm}^{-1}$ (785 nm) or 200 ~ 1900 $\text{cm}^{-1}$ (1064 nm)
Spectral resolution	$\leq 6 \text{ cm}^{-1}$ (785 nm) or $\leq 9 \text{ cm}^{-1}$ (1064 nm)
Unit weight	$\leq 10 \text{ kg}$
Wavelength stability	$\leq 0.01 \text{ nm}$
Detector	Common or deeply cooled
Spectrometer	Transmission spectrometer
Standard accessories	Solid cap, liquid cap, and light-proof sample measuring cell
Optional accessories	Microscope, and mechanically adjustable platform
Software functions	Data acquisition, spectrum data processing, spectrum comparison and equipment calibration
Temperature	Operating temperature: 0 ~ 40 °C; Storage temperature: -20 ~ 55 °C
Data output format	spc, txt, prn, etc.
Power supply	100 ~ 240 VAC, 50 ~ 60 Hz

### JINSP COMPANY LIMITED

Address: 21/F, Building D, THTF S&T Square, Haidian District, Beijing, P.R. China

Tel.: +86(10)-50837191

E-mail: [jinsp@jinsp-tech.com](mailto:jinsp@jinsp-tech.com)

Website: [www.jinsptech.com](http://www.jinsptech.com)



Contact us

JZ-EN-V1.0-202404